

# Amanda Murphy

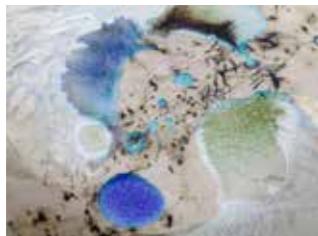


Amanda Murphy Leel studied Ceramics at Crawford College, Cork and completed the Ceramics Design & Skills Course, Thomastown honing her craft at Ardmore, Badger Hill and Stephen Pearse Potteries.

Amanda's range includes decorative hand-built stoneware ceramics; vases, platters and bowls, using oxides and coloured glass to punctuate each piece. The effect of the firing on the glaze and glass renders each piece unique, offering what Amanda calls a 'bird's eye view' of the landscape.

The pieces look like the highs and lows of an Ordnance Survey map. Using a blue-white crystalline glaze, the platters are pieces that can sit on a table or hang on the wall. Inspired in the main by the landscape and the movement offered by views from above, the rippled bowls and jagged edge platters evoke the mountains and other undulations in the land.

*"The wildness of the rugged Irish landscape is what really inspires me"*



AMC/015



AMC/001

# Amanda Murphy Ceramics

Hand made ceramics inspired by a bird's eye view of the Irish landscape.



AMC/006



AMC/020 & /021



AMC/010 & /011



AMC/022 & /023



Amanda Murphy Ceramics  
Clashmore  
Co. Waterford

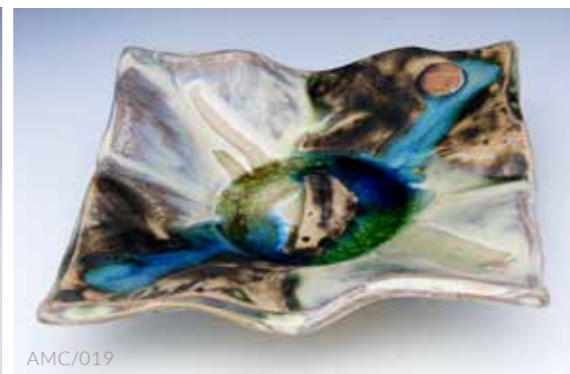
[amandamurphyceramics.com](http://amandamurphyceramics.com)  
[info@amandamurphyceramics.com](mailto:info@amandamurphyceramics.com)  
+353 (0)86 607 2137

[amandamurphyceramics.com](http://amandamurphyceramics.com)  
[info@amandamurphyceramics.com](mailto:info@amandamurphyceramics.com)  
+353 (0)86 607 2137



# Amanda Murphy

The way the glaze and glass melt during firing is different each time, making every piece unique.



## Inspiration

All of the Irish landscape inspires me, from the sea and ripples on the sand to mountains, valleys, rivers and unusual rock formations. Some of the pieces have stamps with stylized symbols on them representing our ancient heritage of ogham stones and Celtic imagery.

## Process

Each piece is either hand built or hand thrown on the pottery wheel. It starts off being rolled out into large slabs of clay which is cut into the required shapes. I apply texture to evoke rocks and earthiness and then put on moulds to create the free flowing shapes. Feet are applied and when firm, the edges are chamfered. Some have thrown additions and final texture is applied. As soon as they are dry and wiped down they have the first bisque firing.

After they come out of the kiln, layers of oxides, wax, glaze and glass are applied. The distinct colouring is then achieved in the final glaze firing when they all melt together.

*"I want my pieces to be textured and eroded as though they were dug from the earth"*

